

For Commercial Applications

Job Name		Engineer / Architect	
Job Location		Wholesaler	
Submittal Date		Contractor	

QD Machined Brass Quick Disconnect

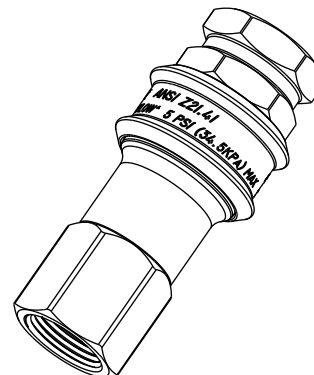
Use: Commercial food service large BTU applications

Design Features:

- **Thermal shut-off** device protection
- **Certified to ANSI Z21.41 (CSA)** used for natural and LP gas

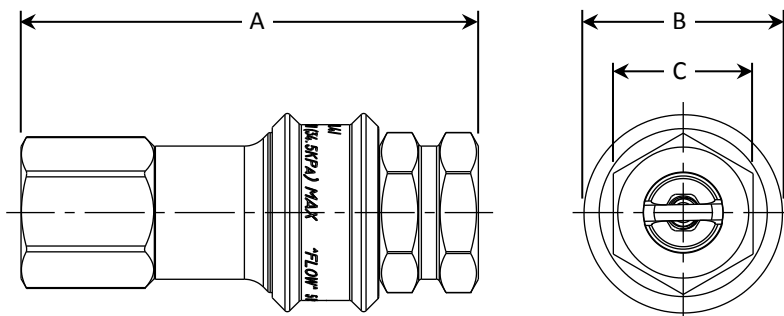
Operating Specifications:

Temperature: 32° to 125° F
Pressure: 1/2 PSI maximum
Max Flow Capacity: 270,000 BTU P/HR natural gas



MATERIAL SPECIFICATIONS	
Body	C36000 brass
Spring	Stainless steel
Thermal Fusible Element	Bismuth/Silicon/Lead
O-Ring	Rubber

PART DIMENSIONS (Inches)			
Model	DIM. A	DIA. B	HEX. C
QD50	4.10	1.59	1.00
QD75	4.30	1.86	1.25
QD100	5.02	2.12	1.50



Part Listing:

- ☐ QD50 1/2" FIP (both ends) x 1/2" quick-disconnect thermal shut-off
- ☐ QD75 3/4" FIP (both ends) x 3/4" quick-disconnect thermal shut-off
- ☐ QD100 1" FIP (both ends) x 1" quick-disconnect thermal shut-off

Listings & Certifications:

- CSA listed to ANSI Z21.41 / CSA 6.16 standard "Used for Natural and LP Gas" (file #162505) 

This specification and all information contained herein is the confidential and exclusive property of Brasscraft Manufacturing Co., and shall not be disclosed to others without the written consent of Brasscraft Mfg. Co. This specification must be returned to Brasscraft Mfg. Co. if requested.

600.03_QD_CFS Street Elbow_REV 10.17

BrassCraft® CFS

©2017 Brasscraft Manufacturing Co.