

# For Commercial Applications

Job Name		Engineer / Architect	
Job Location		Wholesaler	
Submittal Date		Contractor	

## 207 Series Malleable Black Iron / Iron Pipe Coupling

**Use:** Commercial food service applications

### Design Features:

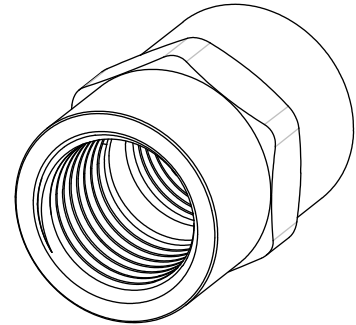
- Finish machined one-piece iron body provides strength, durability, and long-lasting performance

### Operating Specifications:

**Temperature:** 32° to 125° F

**Pressure:** 1/2 PSI maximum

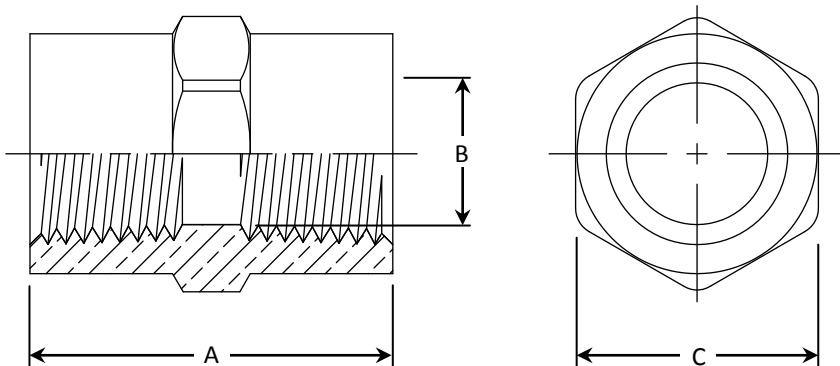
MATERIAL SPECIFICATIONS	
Fitting	Malleable black iron / brass



### Part Listing:

- ☐ 207-12CB 3/4" FIP, both ends, pipe coupling
- ☐ 207-16CB 1" FIP, both ends, pipe coupling

PART DIMENSIONS ( Inches )			
Model	DIM. A	DIM. B	HEX. C
207-12	1.53	.92	1-1/4
207-16	1.53	.92	1-1/4



This specification and all information contained herein is the confidential and exclusive property of Brasscraft Manufacturing Co., and shall not be disclosed to others without the written consent of Brasscraft Mfg. Co. This specification must be returned to Brasscraft Mfg. Co. if requested.

600.09\_207 Series\_CFS\_Malleable\_Black\_Iron\_Coupling\_REV 10.17

**BrassCraft** CFS

©2017 Brasscraft Manufacturing Co.